

Step 2

Install Cabinet Anchor Brackets onto Anchor Studs and Loosely Fasten With Supplied Hardware

Step 4

Tighten Hardware to Secure Cabinet

Step 1

Install 6 Anchor Studs into Ground Placement to Match Anchor Bracket Holes Anchor Bolts Sold Separately or Provided by the Installing Contractor

Step 3

Slide Cabinet Feet Under Anchor Brackets

DIMENSIONS ARE IN INCHES
 TOLERANCES ARE:
 1 PLACE DECIMALS ±.1
 2 PLACE DECIMALS ±.06
 3 PLACE DECIMALS ±.030
 ANGLES ±.1°



10817 SANDEN DRIVE
 DALLAS, TX 75238
 PHONE: 214-348-7105
 FAX: 214-348-7115

SALES@INTRAPACK.COM

DESCRIPTION

DO NOT SCALE DRAWING

CLASS CODE

MANUFACTURED

WEIGHT DATE

CABINET ANCHOR BRACKET MOUNTING DETAIL

THE INFORMATION CONTAINED IN THIS DRAWING IS THE SOLE PROPERTY OF INTRAPACK CORP. ANY REPRODUCTION IN PART OR WHOLE WITHOUT THE WRITTEN PERMISSION OF INTRAPACK CORP. IS PROHIBITED.

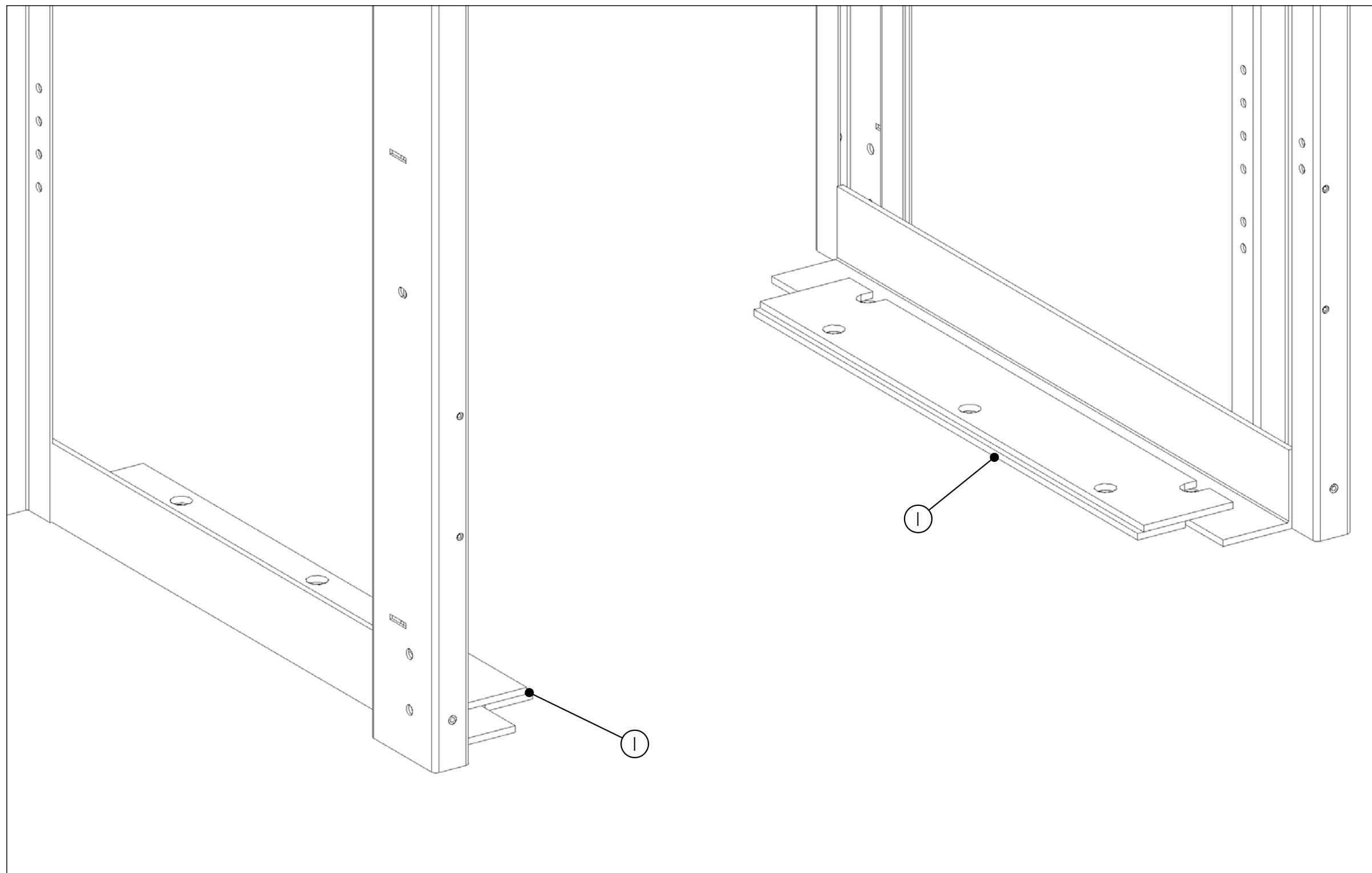
A	RELEASED FOR PRODUCTION	RPP	SO# ##-06	RPP	4/4/06
REV	CHANGE	BY	E.C.N	CHK	DATE

2.0 LBS. 05/02/07

SHEET 1 OF 1

INTRAPACK PART NO. S001898

REV. C



DIMENSIONS ARE IN INCHES
 TOLERANCES ARE:
 1 PLACE DECIMALS ±.1
 2 PLACE DECIMALS ±.06
 3 PLACE DECIMALS ±.030
 ANGLES ±.1°

IntraPack®
 SALES@INTRAPACK.COM

10817 SANDEN DRIVE
 DALLAS, TX 75238
 PHONE: 214-348-7105
 FAX: 214-348-7115

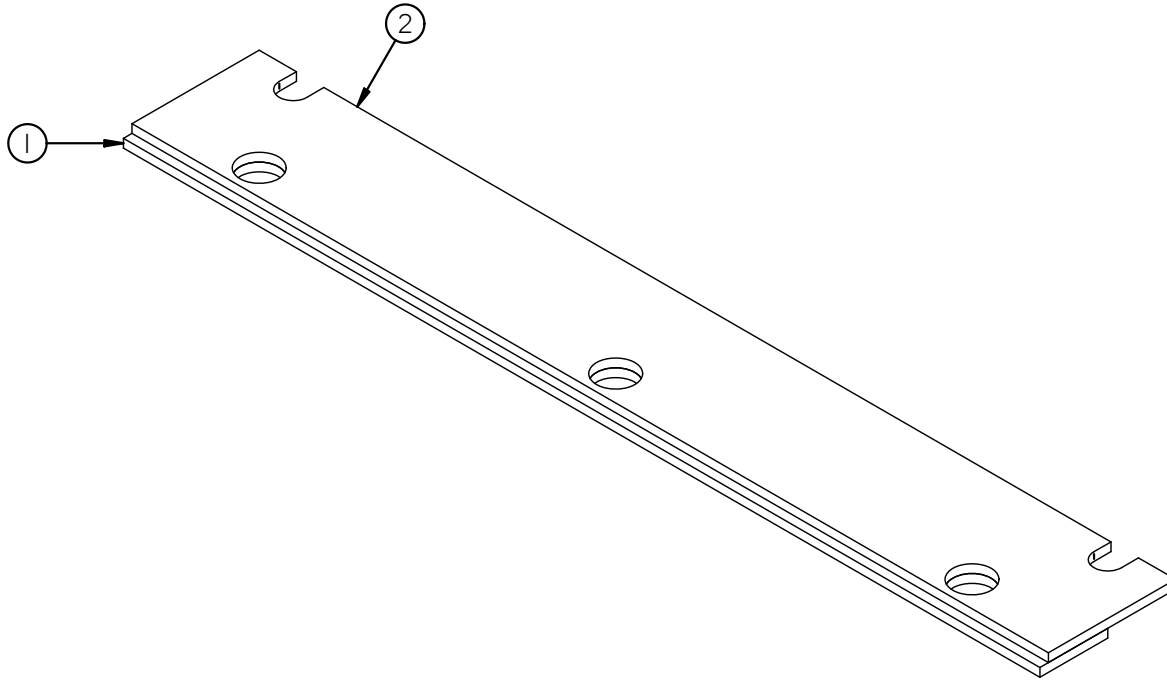
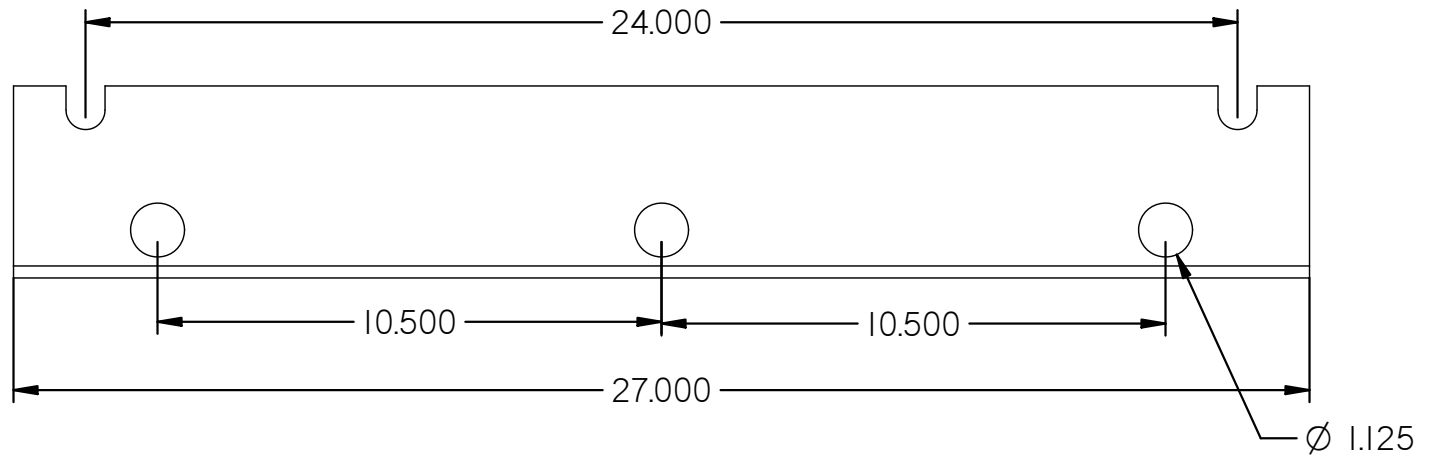
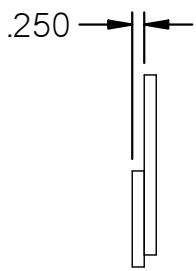
THE INFORMATION CONTAINED IN THIS DRAWING IS THE SOLE PROPERTY OF INTRAPACK CORP. ANY REPRODUCTION IN PART OR WHOLE WITHOUT THE WRITTEN PERMISSION OF INTRAPACK CORP. IS PROHIBITED.

REV	CHANGE	BY	E.C.N.	CHK	DATE
A	RELEASED FOR PRODUCTION	RPP	SO# ##-06	RPP	4/4/06

DO NOT SCALE DRAWING

CLASS CODE	
WEIGHT	DATE
2.0 LBS.	05/02/07

DESCRIPTION		
CABINET ANCHOR BRACKET		
SHEET 1 OF 1	INTRAPACK PART NO. S001898	REV. C



Item	Qty.	Part Number	Rev	Description
1	1	C002380	A	Zone 4 Cabinet Bracket, Bottom Plate
2	1	C002378	A	Zone 4 Cabinet Bracket, Top

THE INFORMATION CONTAINED IN THIS DRAWING IS THE SOLE PROPERTY OF INTRAPACK CORP. ANY REPRODUCTION IN PART OR WHOLE WITHOUT THE WRITTEN PERMISSION OF INTRAPACK CORP. IS PROHIBITED.

REV	CHANGE	BY	E.C.N	CHK	DATE
C	RELEASED FOR PRODUCTION	RPP	SO#06-###	RPP	1/12/2010

DRAWING NO. S001898C		MARKETING PART NO.	
DIMENSIONS ARE IN INCHES TOLERANCES ARE: 1 PLACE DECIMALS ±.1 2 PLACE DECIMALS ±.06 3 PLACE DECIMALS ±.030 ANGLES ± 1°		IntraPack [®] SALES@INTRAPACK.COM 10817 SANDEN DRIVE DALLAS, TX 75238 PHONE: 214-348-7105 FAX: 214-348-7115	
DO NOT SCALE DRAWING		DESCRIPTION Zone 4 Cabinet Bracket, Weldment	
CLASS CODE MANUFACTURED	WEIGHT 0.000 lbm	DATE 1/12/2010	SHEET 1 OF 1
INTRAPACK PART NO. S001898	REV. C		